

CHAPTER 1:

population characteristics

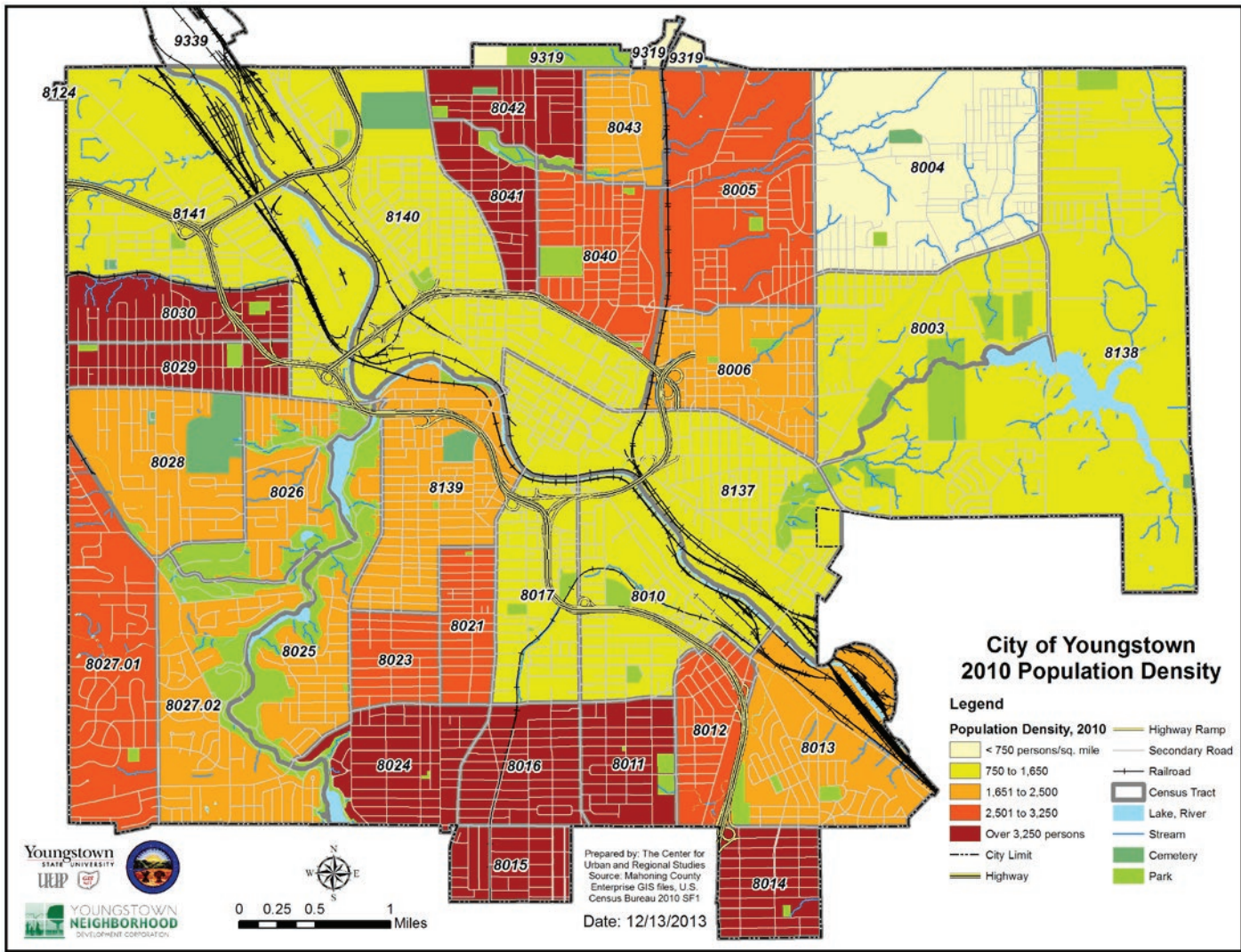


Figure 1.1 - West side census tract 8029 has the highest density in the city.



Figure 1.2 - South side census tract 8016 had the second-highest density.



This chapter explores population characteristics of the City of Youngstown. It provides a snapshot of current demographics, as well as a presentation of trends since 1990. Key topics include density, population change, and the racial composition of city neighborhoods.

Density

The population density of Youngstown is 1,988 people per square mile. The city is 3.5 times more dense than Mahoning County, but comparable to surrounding communities, such as Campbell, Struthers, Boardman, and Austintown. Compared to cities of a similar size, Youngstown's density is greater than that of Gary, Indiana, but significantly less than Flint, Michigan.

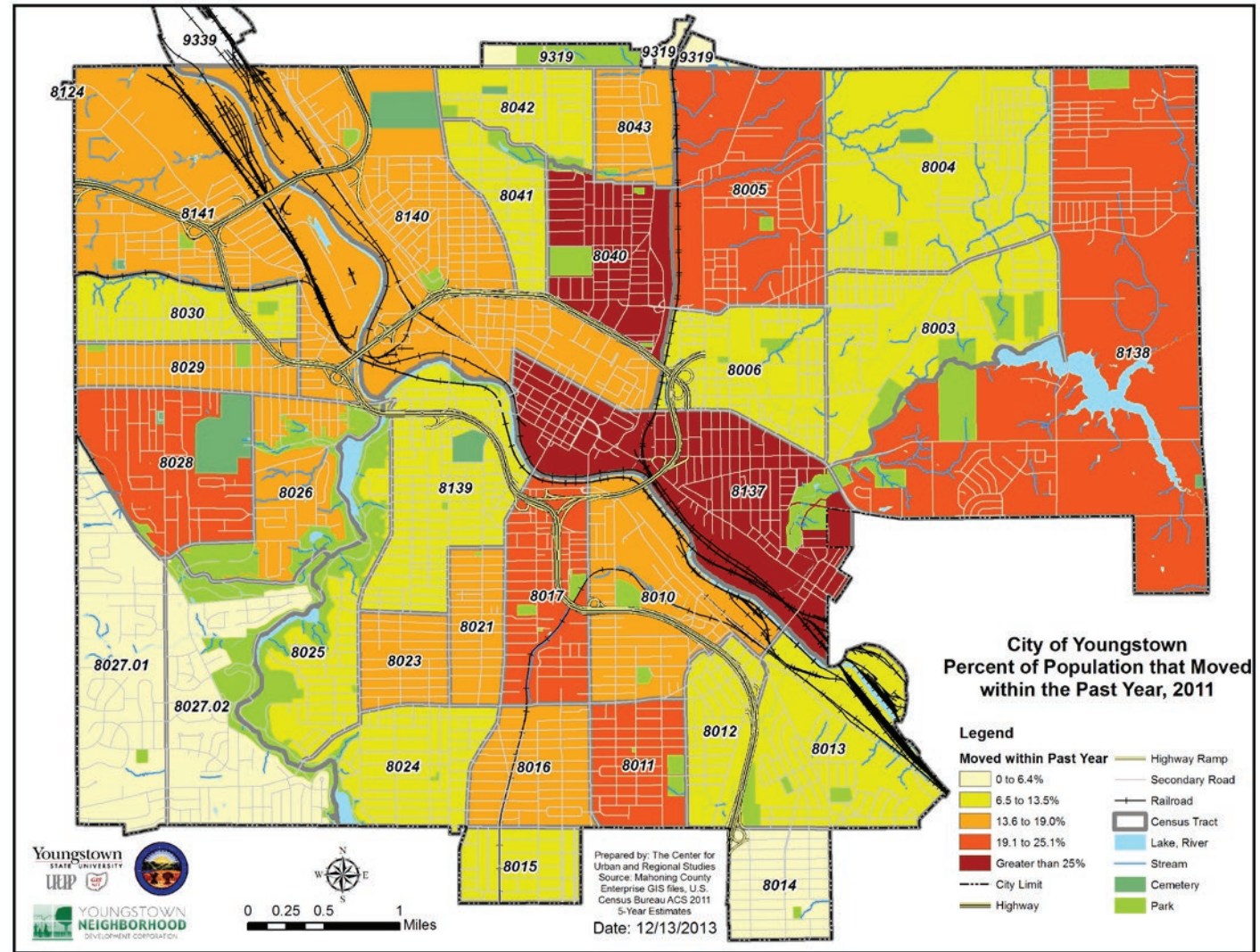
Density varies from a high of 5,286 people per square mile on the west side in tract 8029 to a low of 493 per square mile on the east side in tract 8004. Clusters of high density are located in three main areas of the city: 1) west side tracts 8029 and 8030, both north of Mahoning Avenue; 2) south side tracts 8011, 8014,

8015, 8016, and 8024, all of which border Midlothian Boulevard; and 3) north side tracts 8041 and 8042, along Fifth Avenue.

The three least dense tracts are located on the east side, each having a density of less than 1,000 people per square mile: 8003, 8004, and 8138. These tracts contain McKelvey Lake, Dry Run, Lincoln Park Extension, and semi-rural land that was never developed into dense neighborhoods. Other tracts with low population density are located along the Mahoning River: 8010, 8017, 8137, 8140, and 8141. These had far higher populations in the mid-20th century, but have suffered from extreme abandonment for decades.

Population Change

In 2011 approximately 1 in 6 Youngstown residents had changed addresses within the previous year. In tracts closest to Downtown and Youngstown State University, 8040 and 8137, more than 30% of the population had moved in the past year. Other tracts with high residential turnover, including 8011, 8017, and 8028, are experiencing



demographic shifts: 8011 was 96% White in 1990 but was 43% White in 2010; 8017 lost 60% of its population in the past two decades; and 8028 saw its poverty rate double from 1990 to 2010.

Figures 1.3 and 1.4 - Density is low in tracts along the Mahoning River, where much of the housing stock has been demolished, such as 8137 and 8140.



Census tracts 8027.01 and 8027.02 on the west side and 8014 on the south side saw the least movement in 2011. These tracts have relatively high median incomes and low rates of poverty and unemployment.

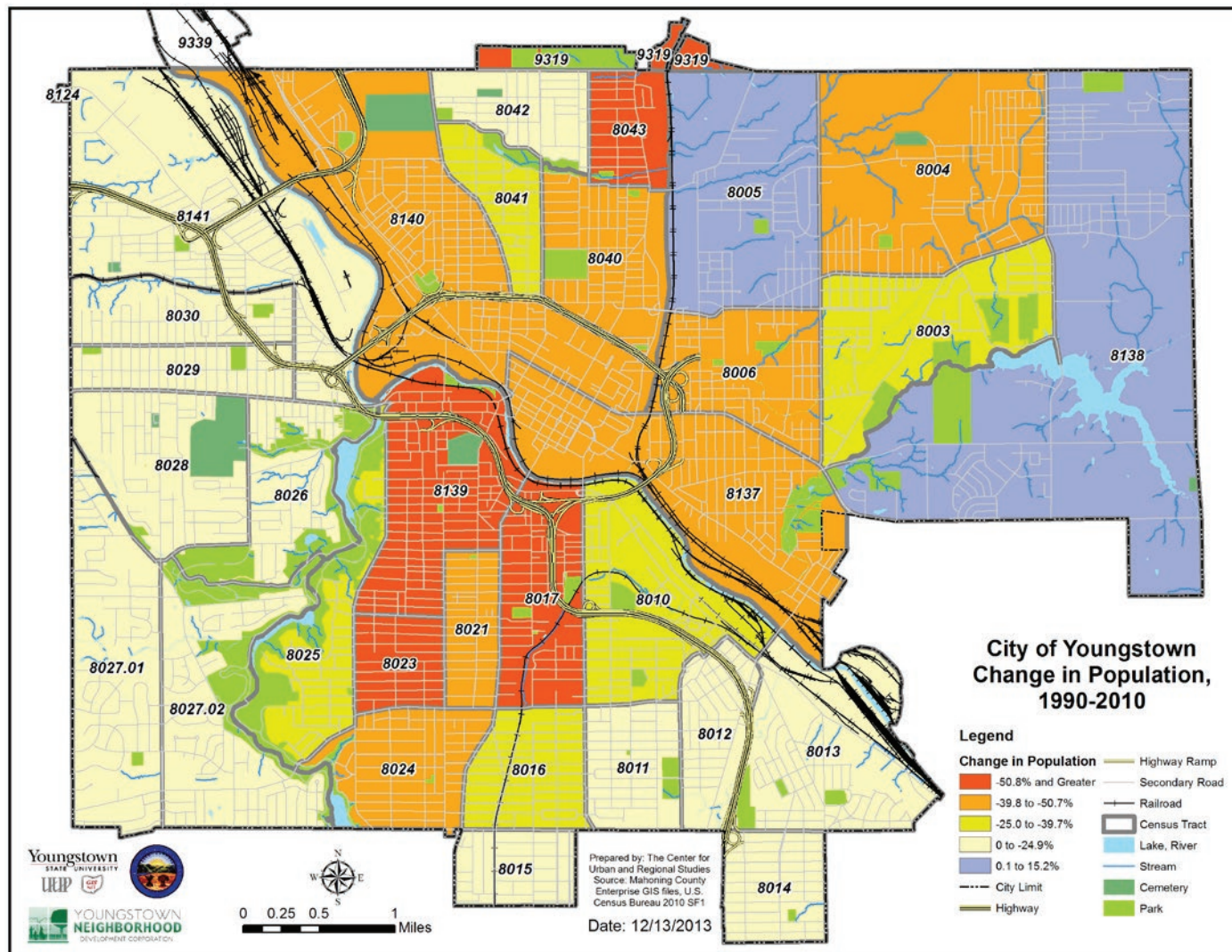
The State of Ohio's population increased 6% be-

tween 1990 and 2010, but both Mahoning County and the City of Youngstown lost a substantial amount of population during the same period. Mahoning County's population declined 10% and Youngstown lost 30% between 1990 and 2010, dropping from 95,732 to 66,982. Youngstown's population loss was similar to that of Gary, Indiana (-32%) and Flint, Michigan

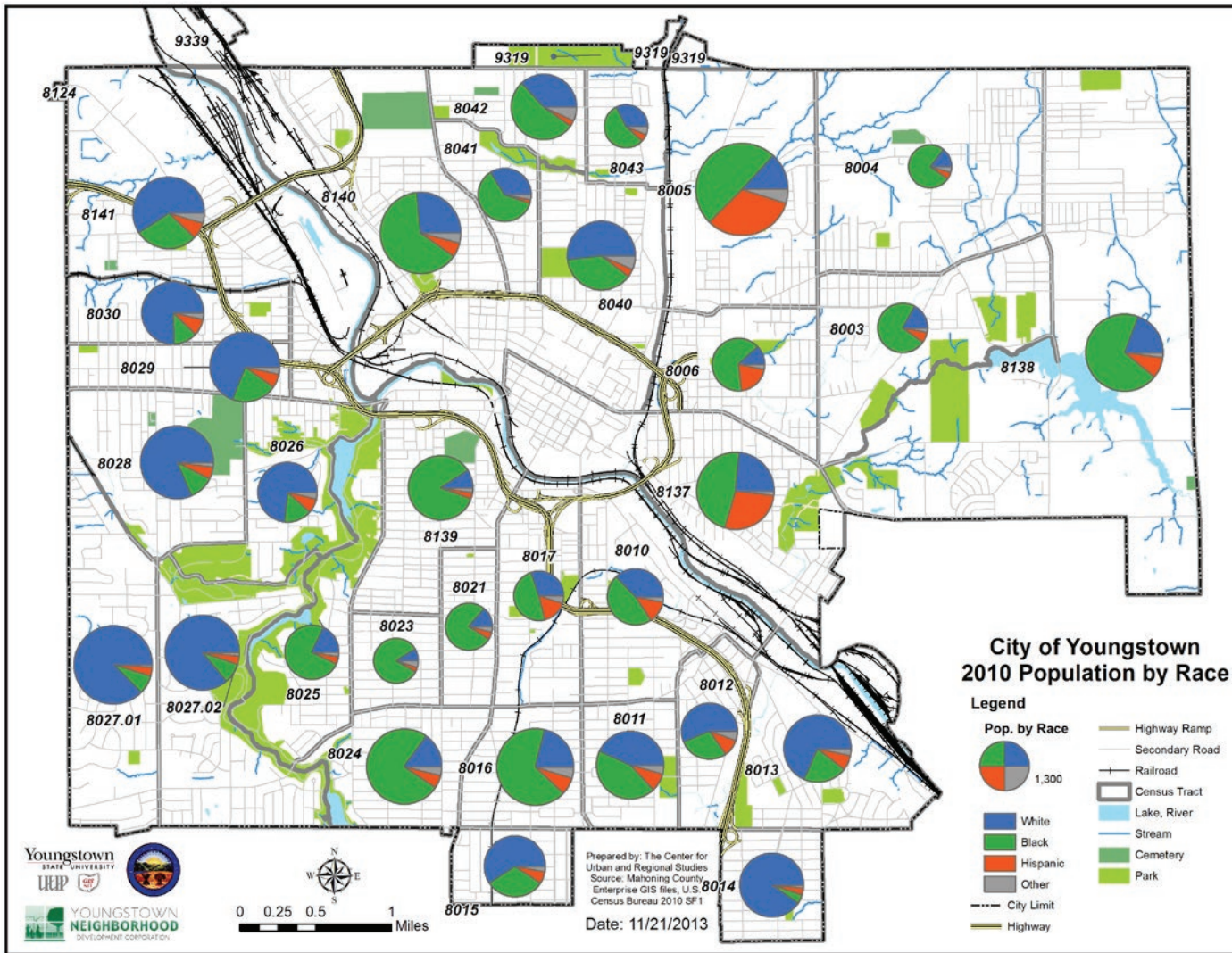
(-27.2%), but far greater than Canton, Ohio (-13.3%) and Erie, Pennsylvania (-6.4%).

While the vast majority of tracts lost residents, the rate of loss varies greatly among tracts. **Census tracts 8011 on the south side, 8027.02 and 8028 on the west side, and 8042 on the north side experienced a loss at approximately half the rate of the city as a whole.** In other tracts, decline was significantly greater than the city's average. For example, south side tract 8017 and north side tract 8043 lost nearly 60% their population in the past two decades. South side tracts 8021, 8023, and 8139 also lost residents at a rapid rate.

Two tracts experienced an increase in population: 8005 and 8138, both on the east side. Rather than representing an influx of population, this increase is due to the construction of two prisons in these tracts. Tract 8138 contains the Ohio State Penitentiary, which opened in 1998 and currently houses approximately 450 inmates. The Northeast Ohio Correctional Center is located in tract 8005. It had 2,071 inmates in 2010, 1,216 of whom were Hispanic.



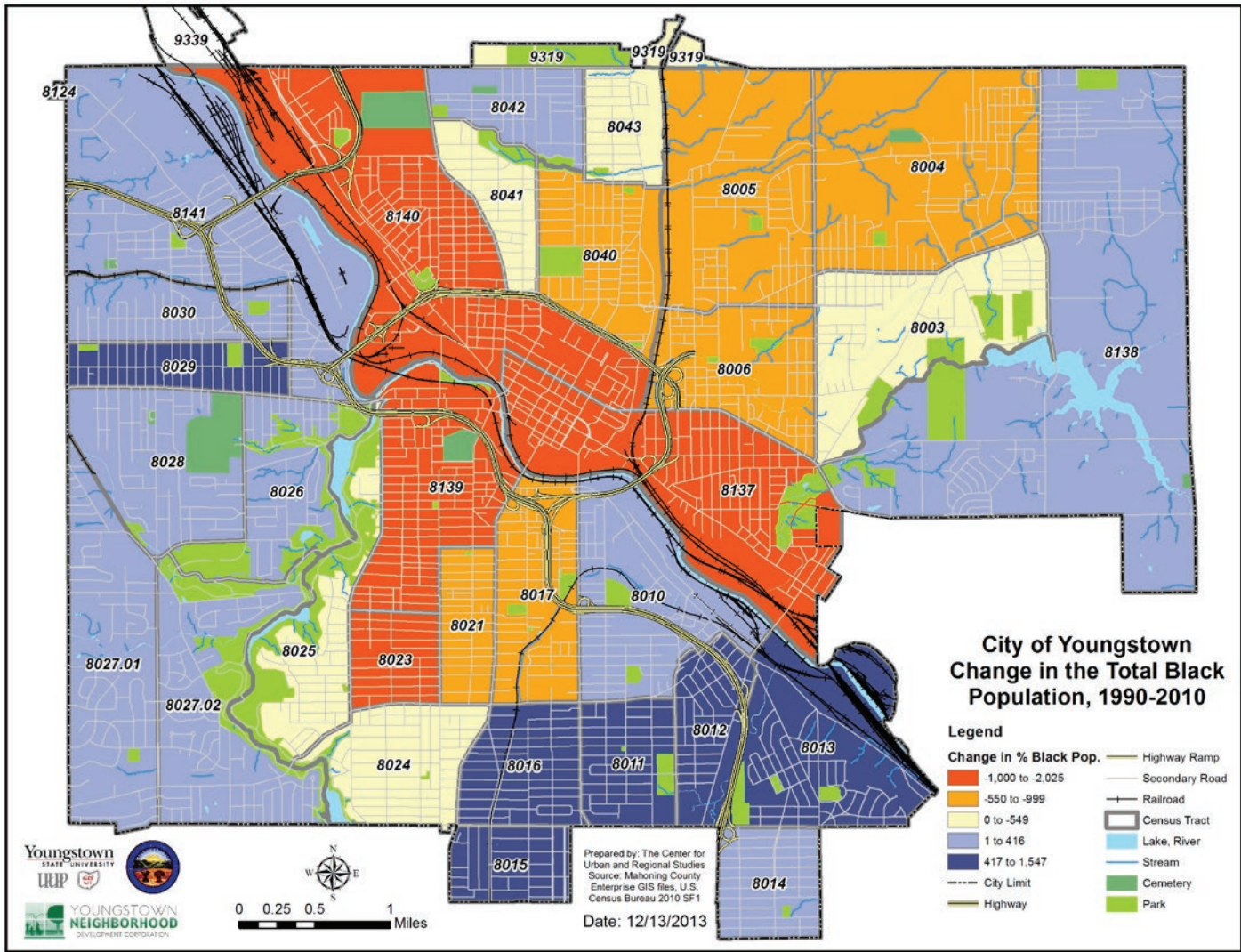
Race and Ethnicity



Figures 1.5-7 - Youngstown is a diverse city.



In 2010, 43% of Youngstown's population was White, 44% was Black, and 9% was Hispanic. **However, despite an essentially equal number of White and Black residents, few census tracts reflect the city's racial distribution.** Twelve tracts on the east and south sides are less than 25% White: 8003, 8004, 8005, 8006, 8137, and 8138 on the east side, and 8016, 8021, 8023, 8024, 8025, and 8139 on the south side. Five tracts, predominantly on the west side, are more than 75% white: 8027.01, 8027.02, 8028, and 8030, as well as 8014 on the south side. Hispanics make up more than 10% of the population in 6 tracts: 8005, 8006, and 8137 on the east side and 8010, 8012, and 8017 on the south side. Several tracts are largely representative of the city's racial make up: 8010 (37% White, 47% Black, 13% Hispanic), 8011 (44% White, 43% Black, 9% Hispanic), and 8015 (59% White, 32% Black, 6% Hispanic) on the south side, and 8040 (52% White, 38% Black, 4% Hispanic) and 8042 (37% White, 53% Black, 3% Hispanic) on the north side.



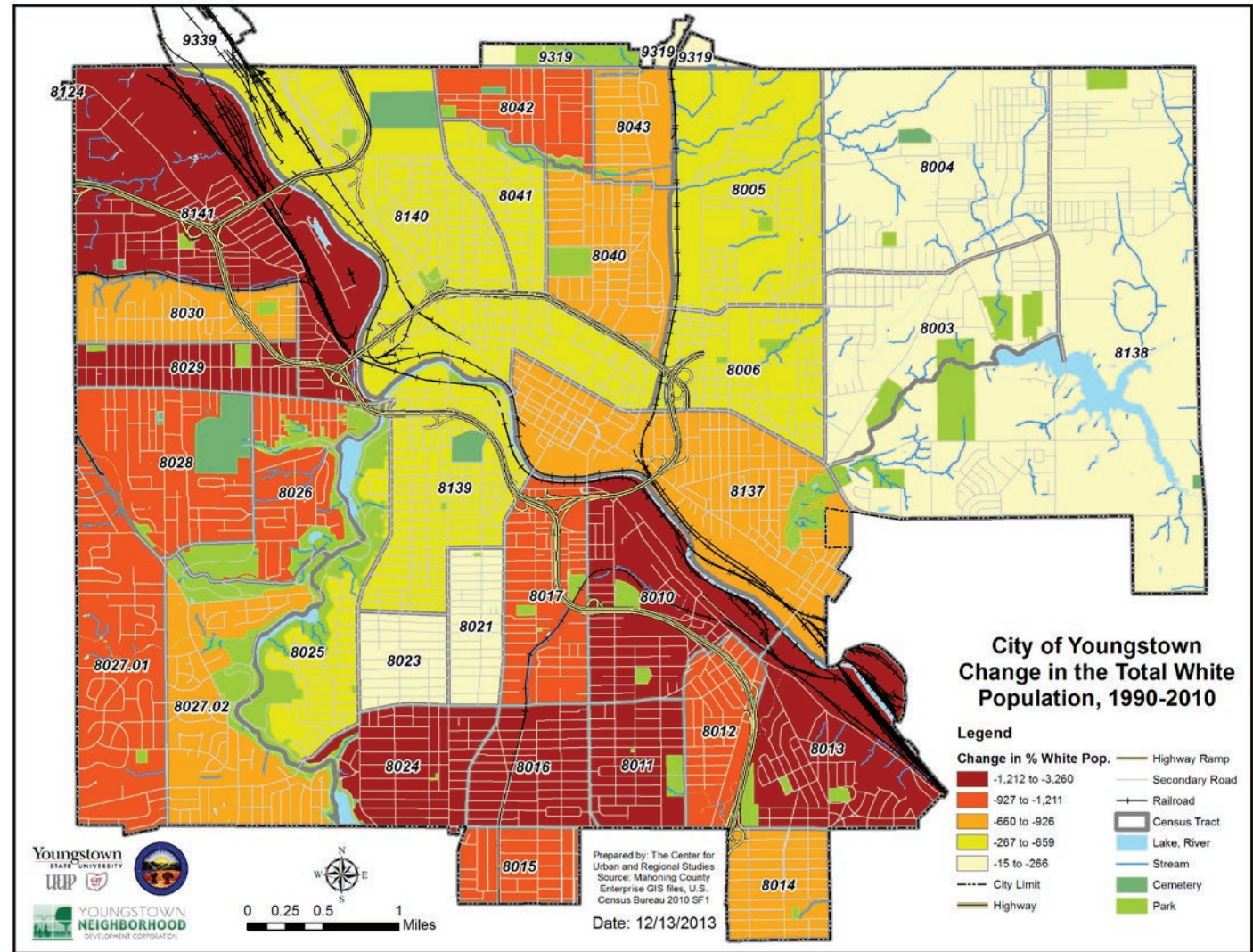
Between 1990 and 2010 the number of Black residents declined by 6,600, a decrease of 18%. In 2010 the Black population stood at 29,449. Losses were concentrated in three main areas: the lower east side, the lower south side, and along the Mahoning River in Brier Hill and Arlington Heights. Tracts 8139 and 8140 lost approximately 2,000 Black residents each. Tracts 8021, 8023, and 8137 each lost roughly 1,000 Black residents.

However, two areas of the city witnessed substantial increases in the number of Black residents: 1) the southeastern portion of the city—tract 8016 posted an increase of 1,500 residents; tract 8011 nearly 1,000; tract 8015 approximately 500; tracts 8010, 8012, and 8013 approximately 450 each; and 2) the west side—tract 8029 increased by 500; tracts 8026 and 8028 by 250-300 each.

The percentage of Black residents in Youngstown (44.0%) is similar to that of Dayton (42.6%), higher than Canton (24.0%) and Erie (16.2%), and lower than Flint (56.1%) and Gary (83.9%). Nationally, 12.2% of US residents are Black, which is roughly equivalent to the percentage in Ohio (12.0%).

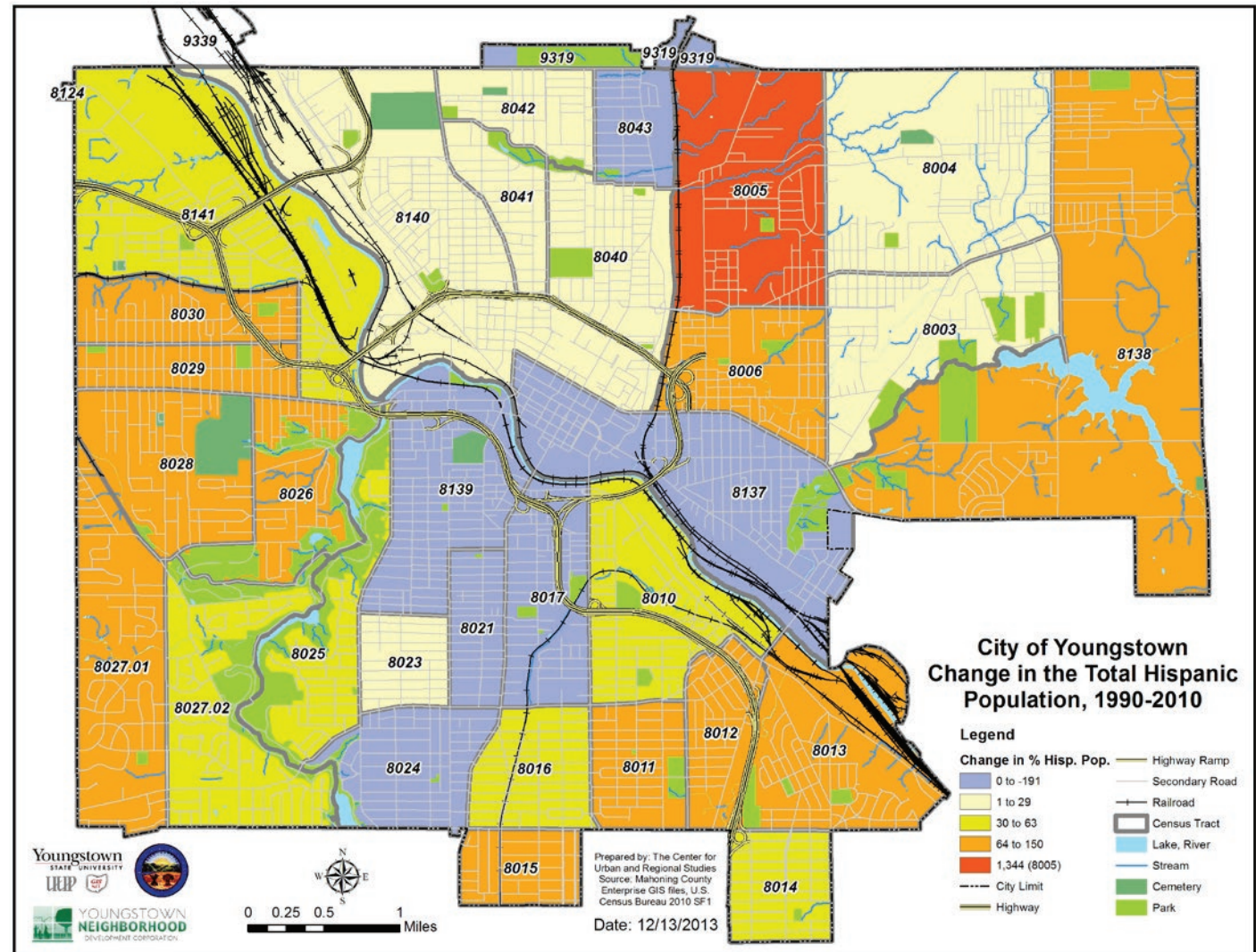
Between 1990 and 2010 the number of White residents declined by 26,000, a decrease of 48%. In 1990 55,225 White residents lived in the city, but by 2010, only 26,293 lived in the city. As with the decreases in Black residents, the declines in White residents were not spread evenly across the city. **Just three census tracts on the south side accounted for more than a quarter of the decrease in White residents: 8011, 8016, and 8024.** 8016 alone lost 3,250 White residents. Five other south side census tracts lost more than 1,000 White residents: 8010, 8012, 8013, 8015, and 8017. Five west side tracts also lost approximately 900-1,200 White residents: 8026, 8028, 8027.01, 8029, and 8141. And on the north side, three tracts lost approximately 900 White residents: 8040, 8042, and 8043.

Census tracts that lost the least number of White residents were located on the east and south sides where Whites made up a very small percentage of the population. These include 8004 and 8138 on the east side and 8021 and 8023 on the south side.



While the number of Black and White residents has been rapidly decreasing across the city, numbers of Hispanic residents are up 2,380 from 1990. There are now 6,200 Hispanic residents in Youngstown. By far the largest increase was in tract 8005. However, this is due to the construction of the Northeast Ohio Correctional Center in the tract. It housed 2,071 inmates in 2010, 1,216 of whom were Hispanic. Outside of 8005, the greatest numerical increases were on the west side and in the southeastern portion of the city. Three tracts along Mahoning Avenue, 8026, 8028, and 8030 experienced an increase of more than 100 Hispanic residents. And on the south side, tracts 8011 and 8012 recorded increases of 100 or more. Losses were greatest in east side tract 8137 and south side tract 8017—both tracts with high rates of overall out-migration.

Youngstown has a higher percentage of Hispanic residents (9.3%) than any regional benchmark cities, as well as higher percentages than Mahoning County (4.7%) and Ohio (3.1%). However, Youngstown's percentage is considerably lower than that of the US (16.3%).



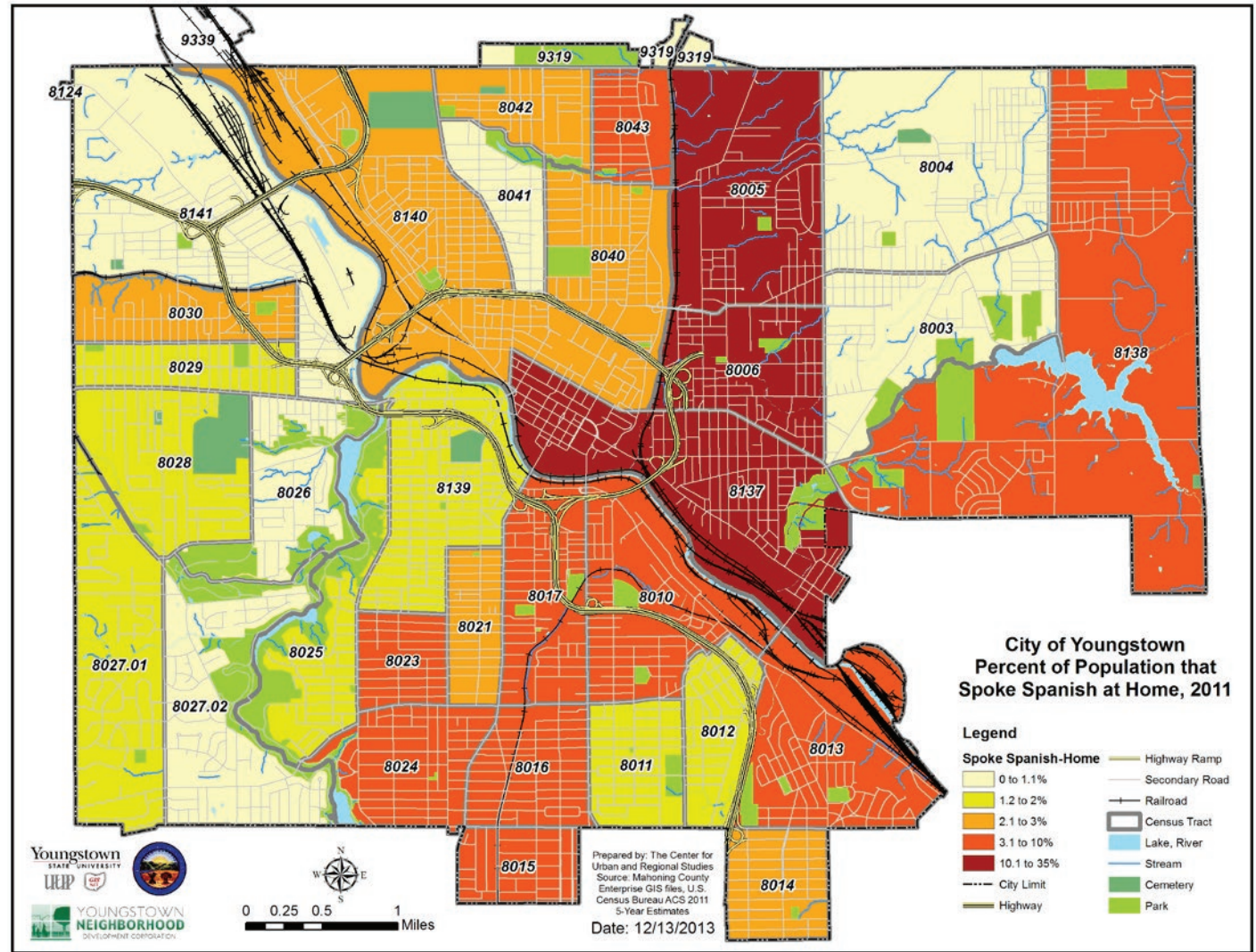
Six percent of families in Youngstown speak Spanish at home. Rates in four census tracts are significantly higher than the city's average: 8005, 8006, and 8137 on the east side; and 8017 on the south side. Substantial increases in the Hispanic population occurred in tract 8006 (9% to 20%), tract 8012 (2% to 10%), tract 8026 (1% to 8%), and tract 8030 (1% to 8%).



Figures 1.8 - La Iglesia de Dios, a church on the east side with services in Spanish.



Figures 1.9 - The Metro Assembly Spanish Evangelical Church on the south side.



Many neighborhoods in Youngstown were associated with an ethnic group who settled there decades ago, such as Italians in Brier Hill and Smoky Hollow, and Slovaks in Lansingville. Today the vast majority of Youngstown residents were born in the United States. Only tract 8005 on the east side has a high percentage (36%) of residents born outside the US.

This is due to the location of the Northeast Ohio Correctional Center. Of the 2,071 inmates there in 2010, 1,261 were Hispanic. The second-highest rate (12%) is tract 8042 on the north side, followed by tract 8137 on the east side (11%). The percentage of foreign-born residents in Youngstown (4.4%) is comparable to Ohio (4.1%) but far low-

er than the percentage in the US as a whole (13.6%). Among similar cities, the percentage in Youngstown is somewhat higher than Gary, Flint, Canton, or Dayton, but lower than Erie and Chattanooga.

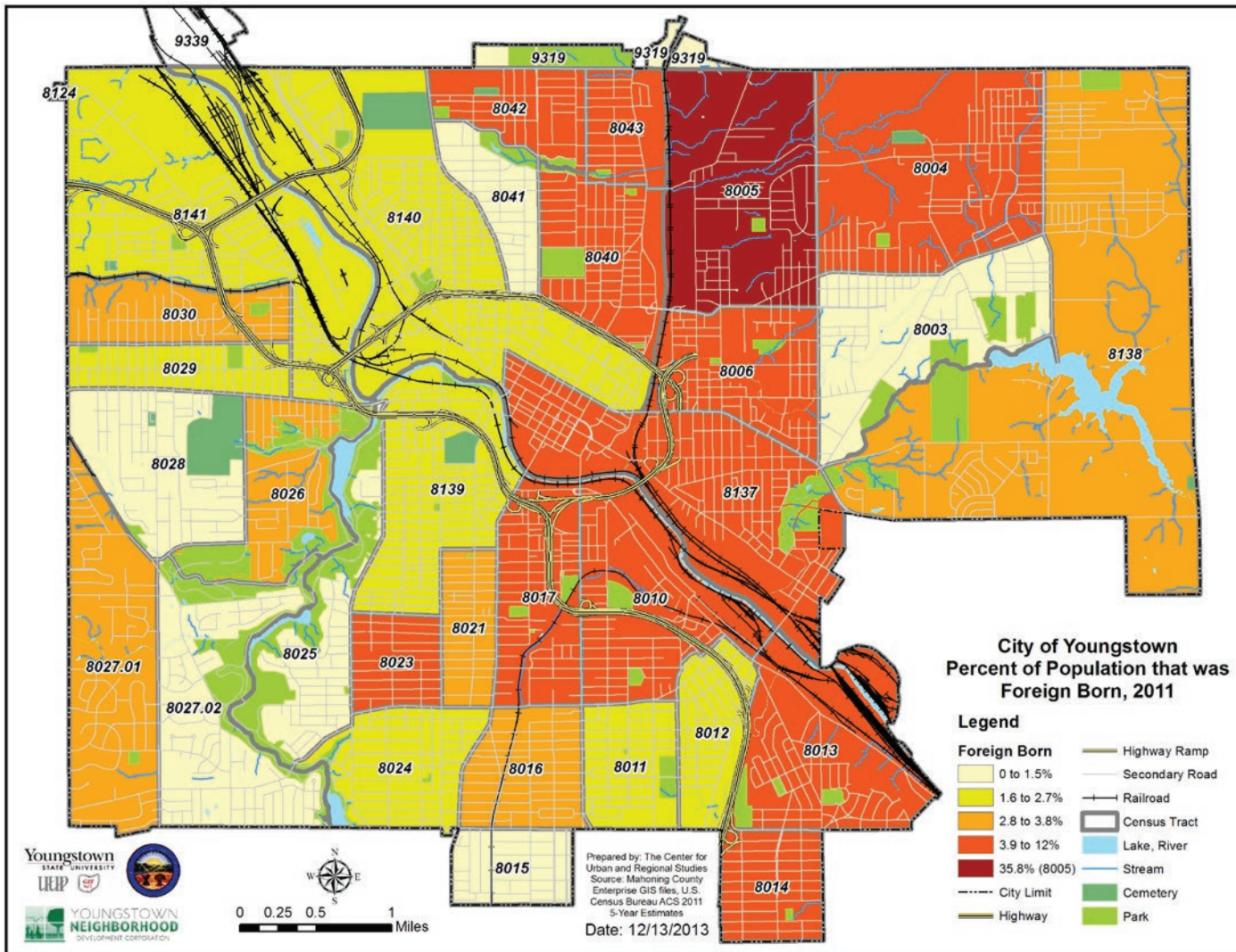


Figure 1.10 - Holy Trinity Ukrainian Catholic Church on Rayen Avenue.



Figure 1.11 - Brier Hill is home to an annual Italian festival.

Neighborhood Groups

In December of 2013, 49 neighborhood groups across the city were contacted to update a list of active groups within the city. Representatives were asked to verify the boundaries of each group, which are shown on the map below and on the

following page. Four neighborhood associations are shown separately as they have a relatively large geographic coverage area and encompass multiple block watches and smaller associations. These include the North Side Citizens Coalition, the West Side Citizens Coalition, the Northeast Homeowners and Concerned Citizens Association, and the

Seventh Ward Citizens Coalition.

Neighborhood groups were categorized according to the number of grants received in order to determine the capacity of each group. Sources of grant funding included Neighborhood Success grants through the Wean Foundation; Lots of Green 2.0 and People's Garden grants through the Youngstown Neighborhood Development Corporation; funding from council members' discretionary budget; and other foundation assistance.

